

objectives need to be enhanced or revised) as well as the extent to which our primary assessment artifact (i.e., the BACCJ Capstone project) still captures students' attainment of our LOs and/or if we need to develop a better tool (e.g., an exit exam). We decided to develop a mater measure and that remains in process and was piloted in the Spring..

Capstone assignment information, rubric, and grading form are all attached at the end of this report.

...to the implementation of our plan, and the tools

(e.g., assignments, rubrics, etc.) used to engage in this important endeavor.

B. How specifically have you decided to use these findings to improve teaching and learning in your program? For example, perhaps you've initiated one or more of the following:

- Changes to the
- Course content
- Course sequence
- New courses

# Customs Paper

As an integrative exercise bringing together the various strands of your CCJ training, each of you will write a major thesis paper. This paper will be worked on throughout the semester and will be

**Section 2: Theory (2-4 pages)**

You need to engage in a sophisticated and nuanced discussion of which theory or theories

### Section 3: Literature Review (6-8 pages)

In this section, you should discuss the literature related to your research topic.

[The remainder of the page is heavily obscured by horizontal black bars, making the text illegible.]

It must be concrete, specific, and thorough. Remember your policy must be substantive, not symbolic, and must be evidence-based (it should be obvious to me how the evidence was

discussed in the lit review would lead to your selection of the evidence that you

justice? Is your policy primarily concerned with advancing social order (crime control) or protecting individual rights (due process)? What safeguards might be necessary to ensure that your policy is implemented appropriately? Is it analogous to other aspects of the system, and/or have similar policies already been enacted?

**Cost/Benefit Analysis.** Evaluate your policy in terms of efficiency; what resources will you need to carry out your policy? How much will it cost? What are your potential cost savings? Explain



You will need to refute potential critiques. Be sure to cite literature that supports your policy's

**Intervention effect.** How will you know if your policy is a success? How will assessments be used to improve the policy?

Also:

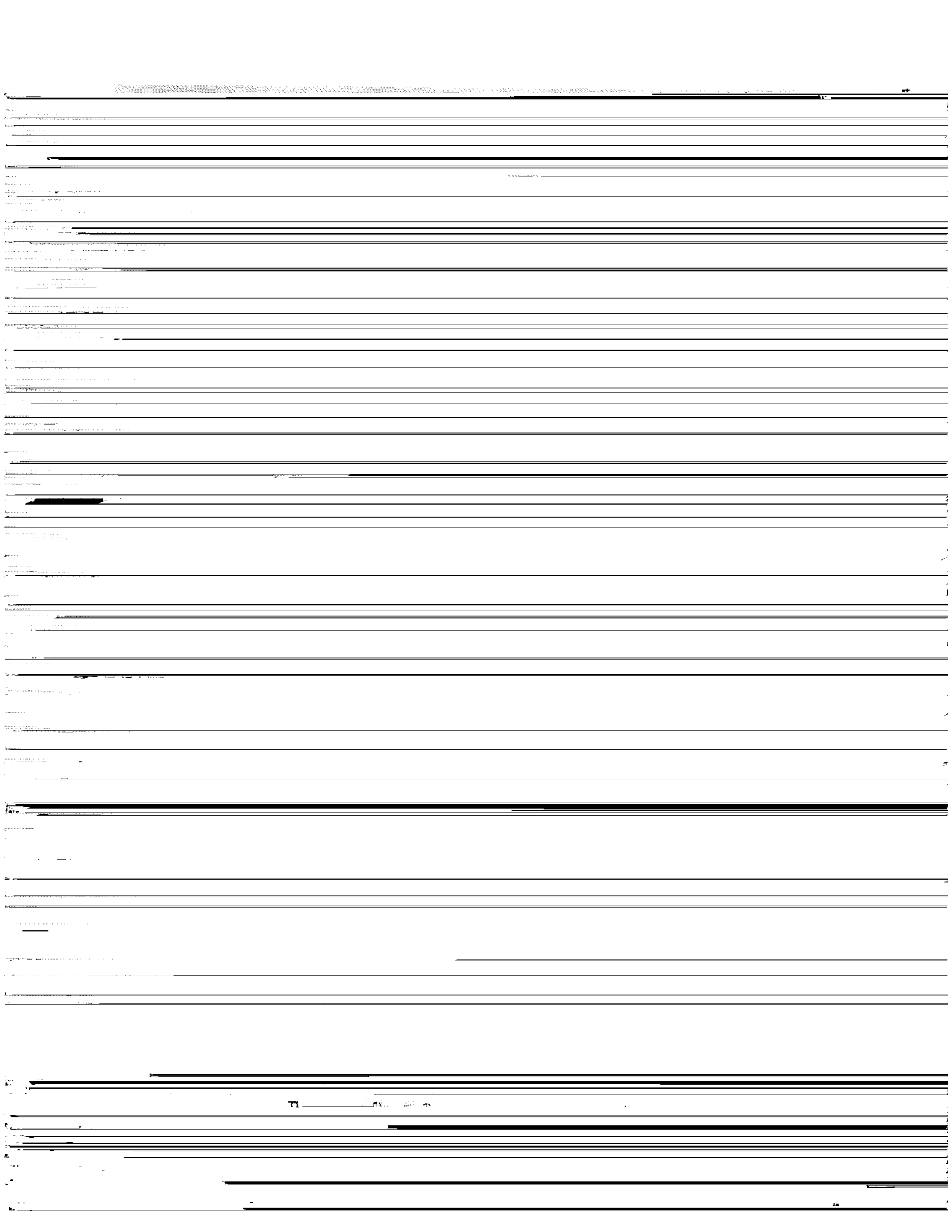
1. Review the **6 C's of policy evaluation** (Concentration, Clarity, Challenge, Changeability, Coordination, and Consistency) to ensure your policy analysis has been complete and thorough.
2. Remember, you are advocating for your policy, but you must also realistically assess the downsides. The results of empirical evaluations of the same or similar policies should be integrated in the policy section to support...

Websites of professional CJ organizations, while not scholarly sources themselves, may lead you to statistics and resources that are scholarly

Books published by **academic presses** like Oxford, North Carolina or other University press also count as scholarly but textbooks and books published by non-academic presses like Penguin, McMillan etc. do not count as scholarly. **Materials used for this class do not count toward your source total but may be used.**

**Your reference list must clearly distinguish scholarly from non-scholarly source (i.e. you will have 2 reference lists one designated scholarly and one designated non-scholarly). You must use APA 6<sup>th</sup> edition reference style (see section on APA below) for your reference list and internal citations within the paper.**

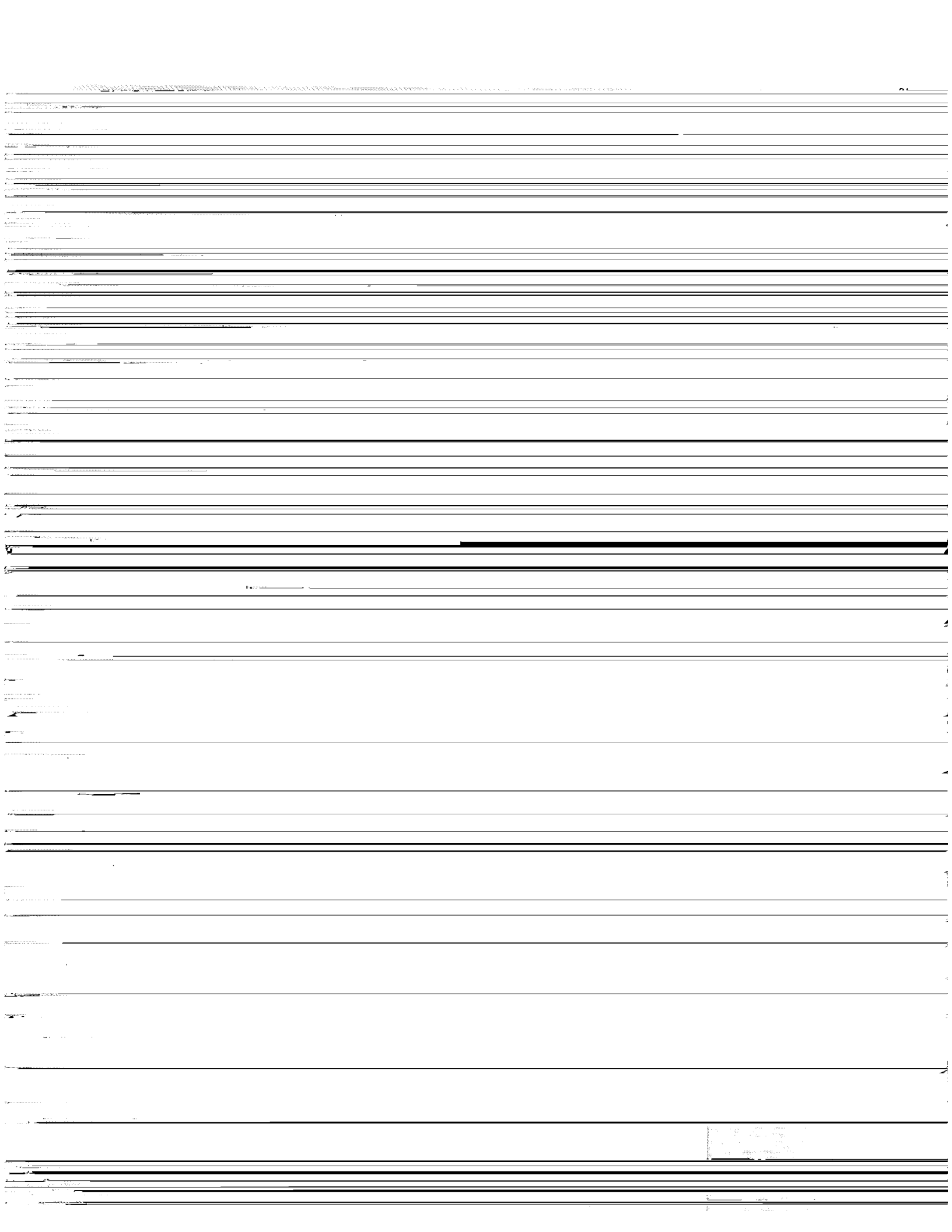
tent  
re  
the



d.  
ant  
per.

nd  
re

ts  
he  
) and  
ites  
for  
e,  
pbrate  
is  
ured,  
of  
of



Data 2023

June

Completed for School  
SLO 2

Unit Point	Literature Review 5 Points	Policy 3 Points	Policy Goals 4	Ethical Consideration 3	Multiculturalism and Equity 3 Points	Implementation 4 points	Formatting 3 Points	Grammar 3 Points	Total Points Thesis Paper 35 Points
2	5	2	3	3	2	2	1	2	25
3	5	3	2	2	3	4	3	2	32
3	5	3	2	2	2	4	2.5	2	31.5
3	5	2	3	3	3	1.5	3	3	31.5
3	5	2	3	3	3	3	2	3	31
3	5	3	3	3	3	4	2	3	34
2	5	3	3	3	2	3	2	3	30
2	3.5	2	3	3	3	3	1	3	25.5
2	4	2	2	2	2	3	2	2	25
3	5	3	3	3	3	4	3	3	35
2	5	2	3	3	3	4	1	3	31
3	5	3	3	3	3	4	3	3	35
3	5	3	3	3	3	4	1.5	3	33.5
3	5	3	1	1	3	4	1	3	31
3	5	3	3	3	3	1.5	1	3	30.5
3	5	3	3	3	3	4	2	3	34
3	5	3	3	3	2	1.5	2	3	30.5
3	2	3	1	1	3	4	1	3	28
3	5	3	1	1	3	1.5	3	3	30.5
3	5	4	1.5	1.5	3	1.5	1.5	3	28



22	2	4	5	3	4	1.5	3	1.5	3	30
23	3	4	5	3	4	3	3	3	0	29
24	3	4	5	3	4	3	3	4	3	35
25	3	4	5	3	4	3	3	4	2	34
26	3	4	5	3	4	3	3	4	3	35
27	3	4	5	3	4	3	3	4	3	35
28	3	4	5	3	4	3	3	4	3	35

1	2	1	3	9	39	7	7	3	1.5	3
1	2	1	4	10	39	8	8	4	3	3
1	2	1	4	10	35	8	8	4	3	3
1	2	1	4	10	44	8	8	4	3	3
1	1.5	1	4	9.5	44.5	8	8	4	3	3
1	2	1	4	10	45	8	8	4	3	3
1	2	1	4	10	45	8	8	4	3	3

exceeding 80% threshold 20 or Exceeding Threshold 83.3

data

Std Deviat Variance Count  
0.63 0.39 25

Maximum Mean  
4 3

Count  
1  
1  
18  
5  
25

Std Deviat Variance Count  
0.9 0.81 25

Maximum Mean  
4 3

Count  
2  
1  
3  
19  
25

Std Deviat Variance Count  
0.75 0.56 25

Maximum Mean  
3

Count  
14  
7  
4

Arguments about punishment

0.00% 0  
100% 25

Minimum Maximum Mean

Std Deviat Variance Count

most notable contribution to Social Reaction theory is the argument that society's public behavior as a result of deviant will lead to subsequent punishment. This social process is also known as what?

1 4  
24.00% 6  
4.00% 1  
12.00% 3  
60.00% 15  
100% 25

.08 1.26 1.59 25

% Count

Minimum Maximum Mean

Std Deviat Variance Count

theory most notably influenced practices and structure of the criminal justice system?

2 2  
0.00% 0  
100.00% 25  
0.00% 0  
0.00% 0  
100% 25

2 0 0 25

Minimum Maximum Mean

Std Deviat Variance Count

being is NOT a core argument made by Social

1 4

.96 0.96 0.92 25

Count

11  
5  
8  
1  
25

14.00%  
20.00%  
32.00%  
4.00%  
100%

%

law is inked

that

Std Deviat

1.2 1.43 25

Mean

4 3.08

Minimum

1

Count

4  
5

16.00%  
20.00%

%

o

or

tribute  
wellbeing.  
er from

Std Deviat

0.43 0.19 25

Mean

4 2.12

Minimum

2

Count

0

0.00%

%

s of a  
time is

23  
1  
1  
25

Maximum Mean

3

.36

Count

20

1

4

25

Maximum Mean

4

.56

Count

14

9

1

Standard Deviation

0.74

25

0.55

Standard Deviation

0.75

25

0.57

Count

Count

Count



Count

25

Count

25

Count

Std Deviat

0.39

Std Deviat

0.8

Std Deviat

4 2.8 1.1 1.2

Count

3

9

3

10

25

Maximum Mean Std Deviatl Variance

3 2.36 0.84 0.71

Count

6

4

15

0

25

Maximum Mean Std Deviatl Variance

4 3.88 0.59 0.35

Count

1

5

unt

unt

Mean Standard Deviation Variance Count

1.28 0.6 0.36 25

Mean Standard Deviation Variance Count

1.2 0.69 0.48 25

1  
1  
25

um Mean	Std Deviat	Count
4	2.12	0.91
8		
7		
9		
1		
25		

83 25

um Mean	Std Deviat
2	1.44
14	0.5
11	
0	
0	
25	

0.25 25

um Mean	Std Deviat
4	2.92
1	0.76

0.58 24

td

td

td

nce

nce

ince

0.93

0.29

1.08

nt

nt

unt

5

5

Count  
 3  
 4  
 7  
 11  
 25

0%  
 0%  
 0%  
 0%  
 0%

m Maximum Mean Std Deviat

1 4 2.76 1.36 1.86 25

Count

8  
 3  
 1  
 13  
 25

0%  
 0%  
 0%  
 0%  
 0%

m Maximum Mean Std Deviat

1 4 2.5 0.71 0.5 24

Count

1  
 12  
 9

7%  
 0%  
 0%

ance Count  
0.04 25

ati V  
.2

ance Count  
1.01 25

ati \  
01

iance Count

ati

24

Count

24

Count

0.6

1.13

4

Count

% 23

% 0

% 0

% 1

% 24

Maximum Mean Std Deviat Vari

0.8

1.33

4

Count

% 20

% 1

% 2

% 1

% 24

Maximum Mean Std Deviat Vari



04

Count

08

Count

e

.83

Std

Std

8

17  
0  
7  
0  
4

n Mean

4  
0  
0  
0  
4  
4

1

Std Deviatl Variance Count

0 0 24

n Mean

4  
13  
6  
4  
1  
24

Std Deviatl Variance Count

1 0.89 0.79 24

Count

11

Count

0.5

Count

0.08

4

% Count

always

8.33% 2

indicate  
people

91.67% 22  
0.00% 0

and jury

0.00% 0  
100% 24