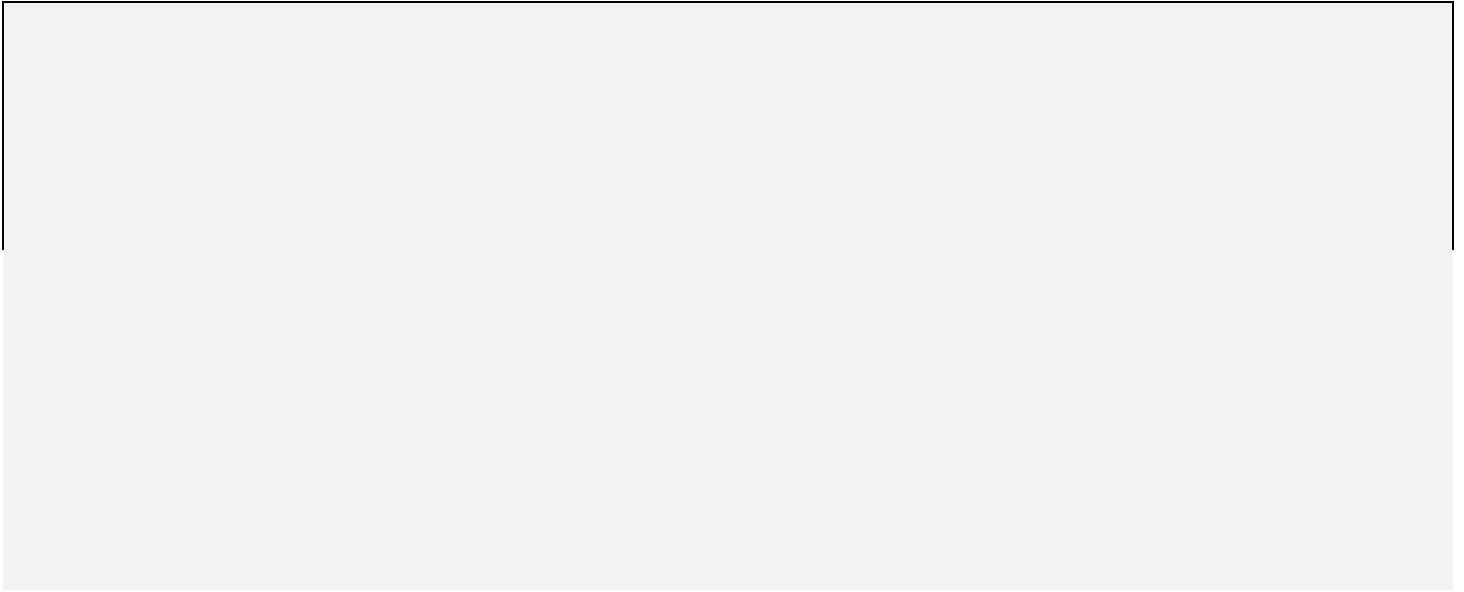
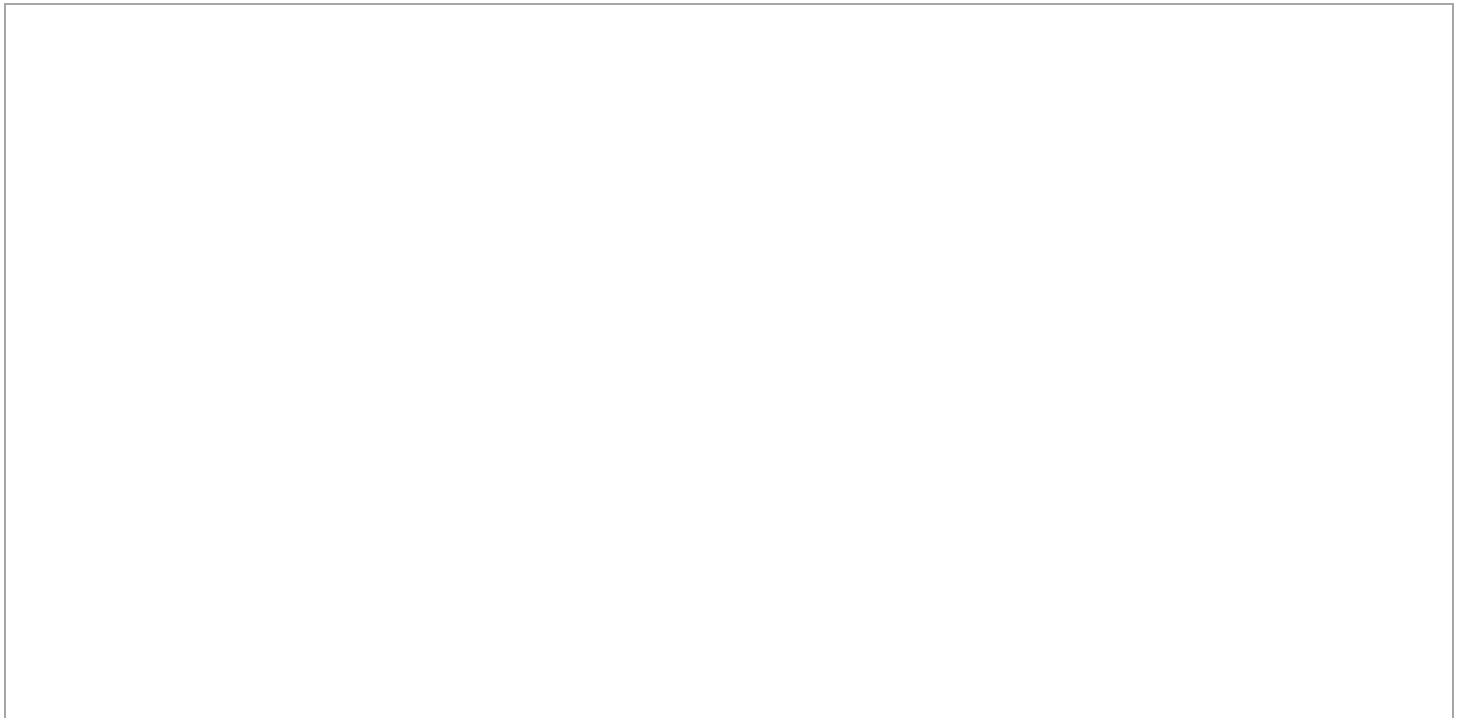


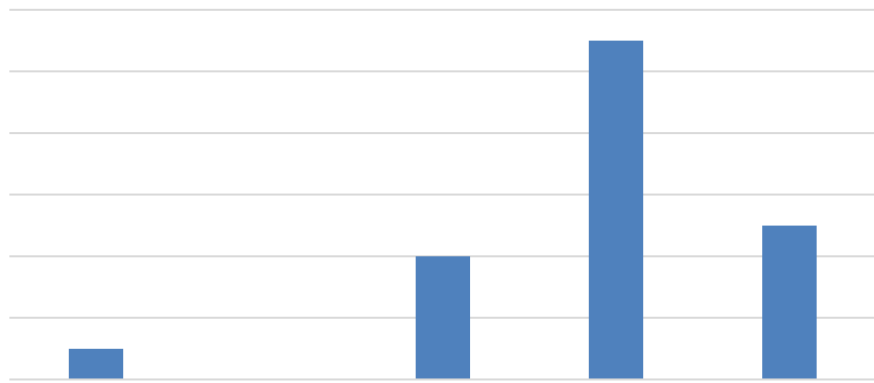
## Program-Level Assessment: Annual Report

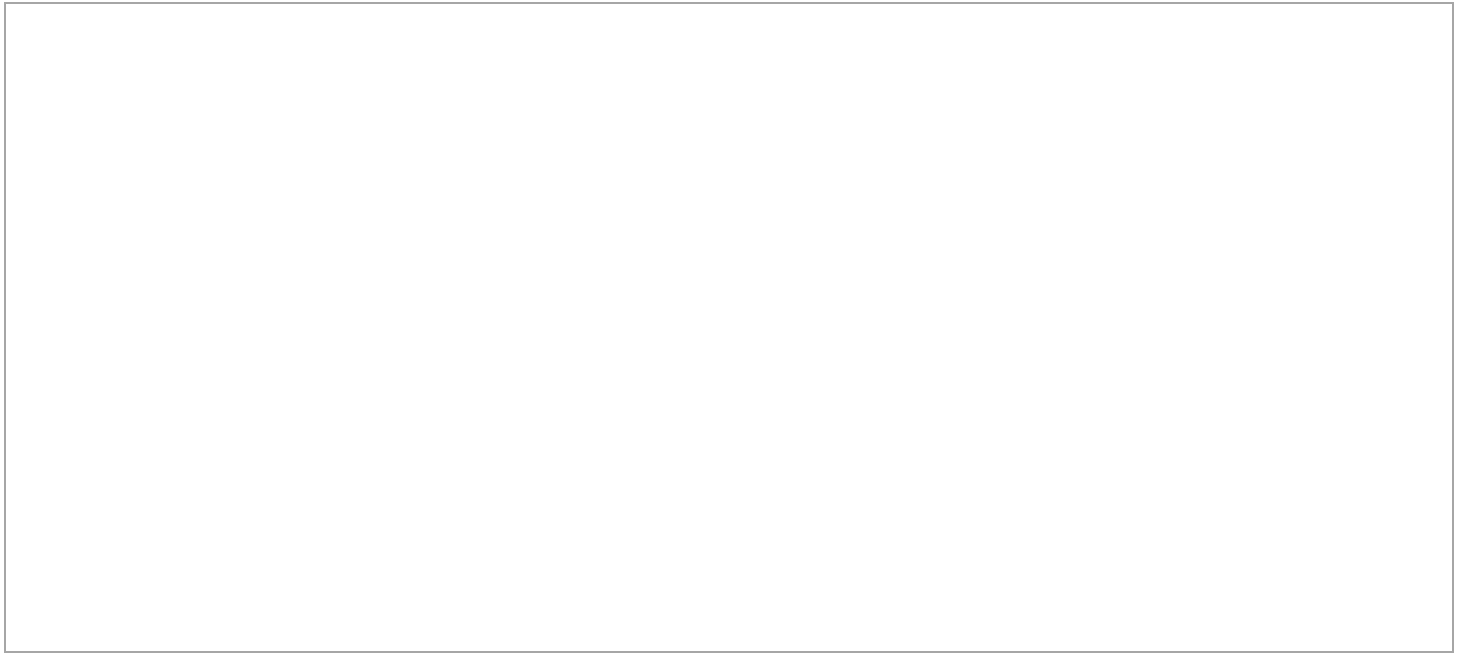
A large, empty rectangular box with a thin black border, occupying the upper half of the page. It is intended for the main body of the annual report.A horizontal, empty rectangular box with a thin black border, located below the main content area. It is likely a placeholder for a sub-section header or a specific data point.

### 2. Assessment Methods: Artifacts of Student Learning

A large, empty rectangular box with a thin black border, occupying the lower half of the page. It is intended for the detailed description of assessment methods and student learning artifacts.







5. Findings: Interpretations & Conclusions

A.

- 
-

A.  
data

as a result of previous assessment

B.

C.

D.

**IMPORTANT:** Please submit any assessment tools (e.g., artifact prompts, rubrics) with this report as separate attachments or copied and pasted/appended into this Word document. Please do not just refer to the assessment plan; the report should serve as a stand-alone document. Thank you.