

Inside this issue:

SLU News

[Hospital Progress](#)

Outpatient Offices

[555 N. New Ballou, Belton](#)

Facial Plastics

[Welcoming Dr. Sims & Staff](#)

International Elective

[Dr. Samkon Gado](#)

Harkins Graduation

[Awards Ceremony](#)

Faculty News

[Resignation and Appointment](#)

News

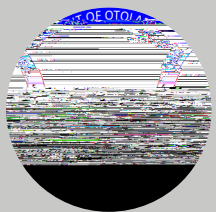
[Dean Dr. Sattone](#)

[Incoming Residents](#)

For Job Postings



Give Now

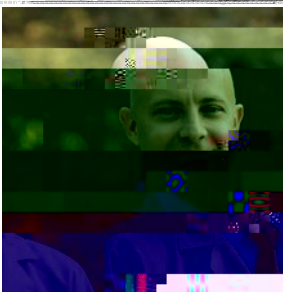


[Saint Louis University Department of Otolaryngology, Head and Neck Surgery](#)

[The new progress of the new Saint Louis University Hospital scheduled to open 2020](#)



...in our Administration at Saint Louis University. We are pleased to announce that the new Saint Louis University Hospital is scheduled to open in 2020. This new hospital will be a state-of-the-art facility with a growing Facial Plastic Division. We look forward to seeing you there!



Justin Antisdal, MD.
Chairman

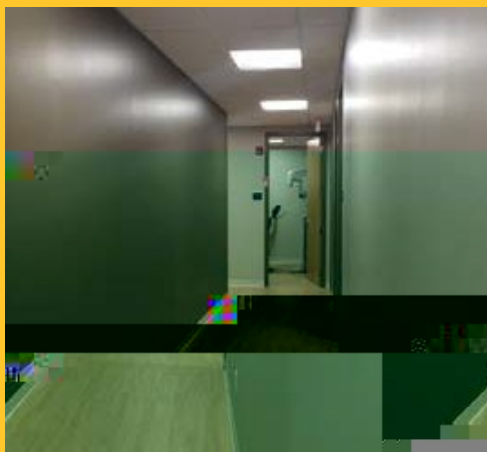
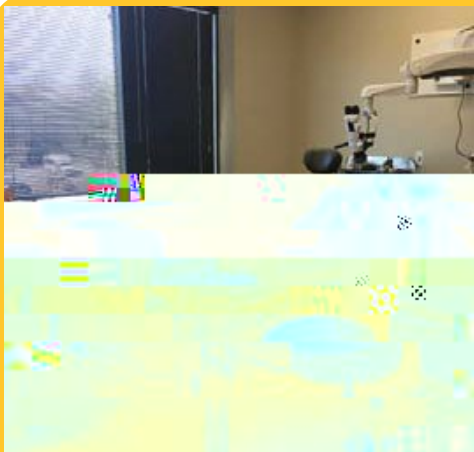
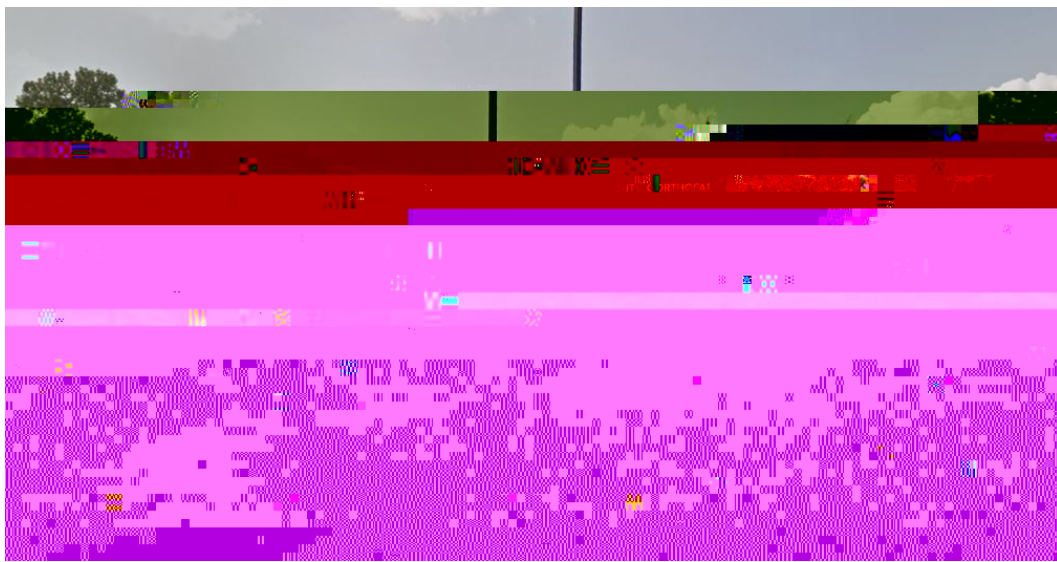
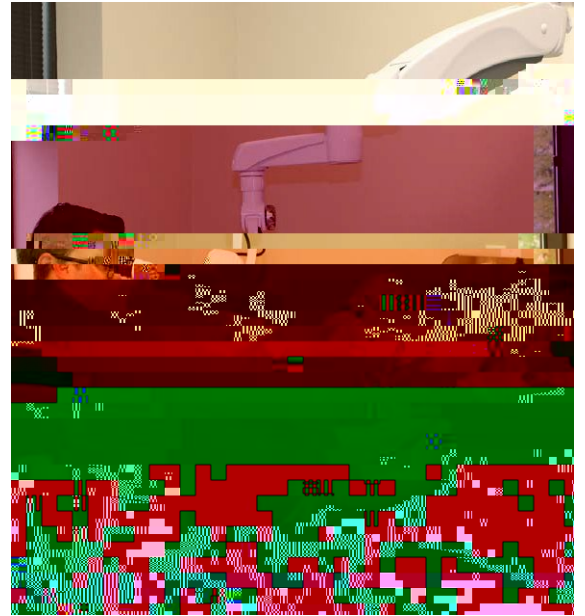
JA

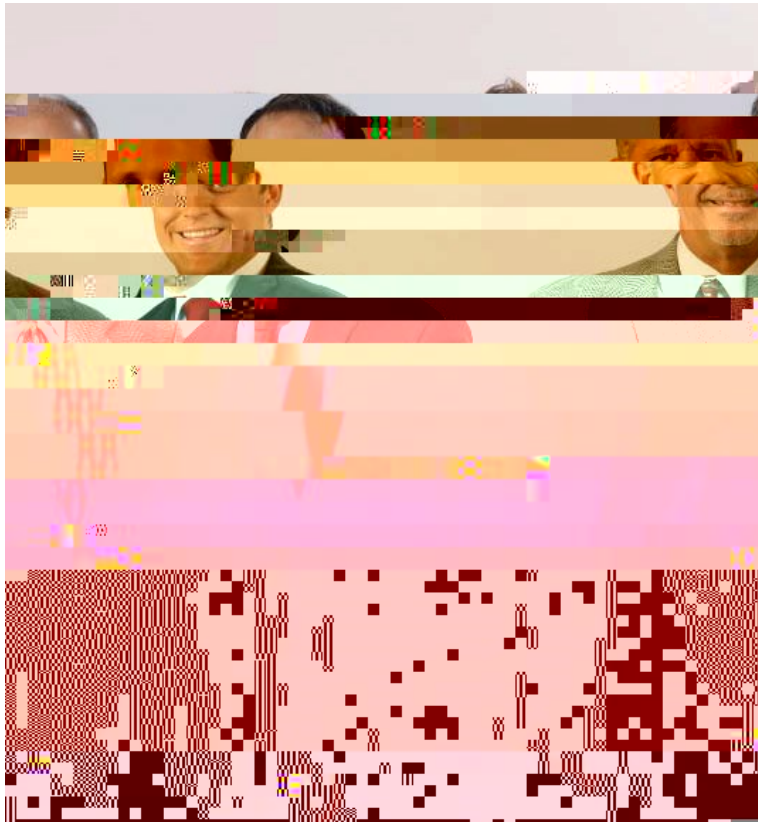
...this fall. Registration is open at [slu.edu/otolaryngology](#). We look forward to seeing you there!



5100 N. 98th Street, Suite 100, West Creek, WI 53090
555 N. New Berlin Road, Suite 900, West Creek, WI 53090
10000 W. Wisconsin Ave., Suite 100, West Creek, WI 53090
Plastics practice

Great office with the best location in the city. The city is a beautiful office space with a great view of the city and a great view of the city.





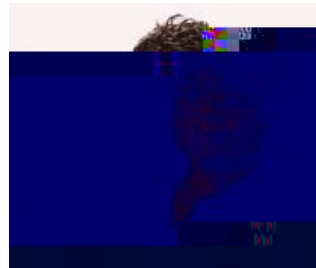
the



Special Practice Team

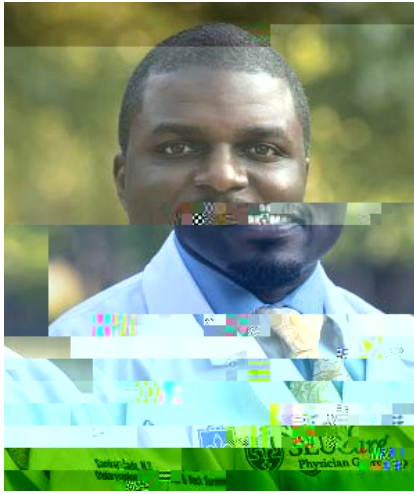


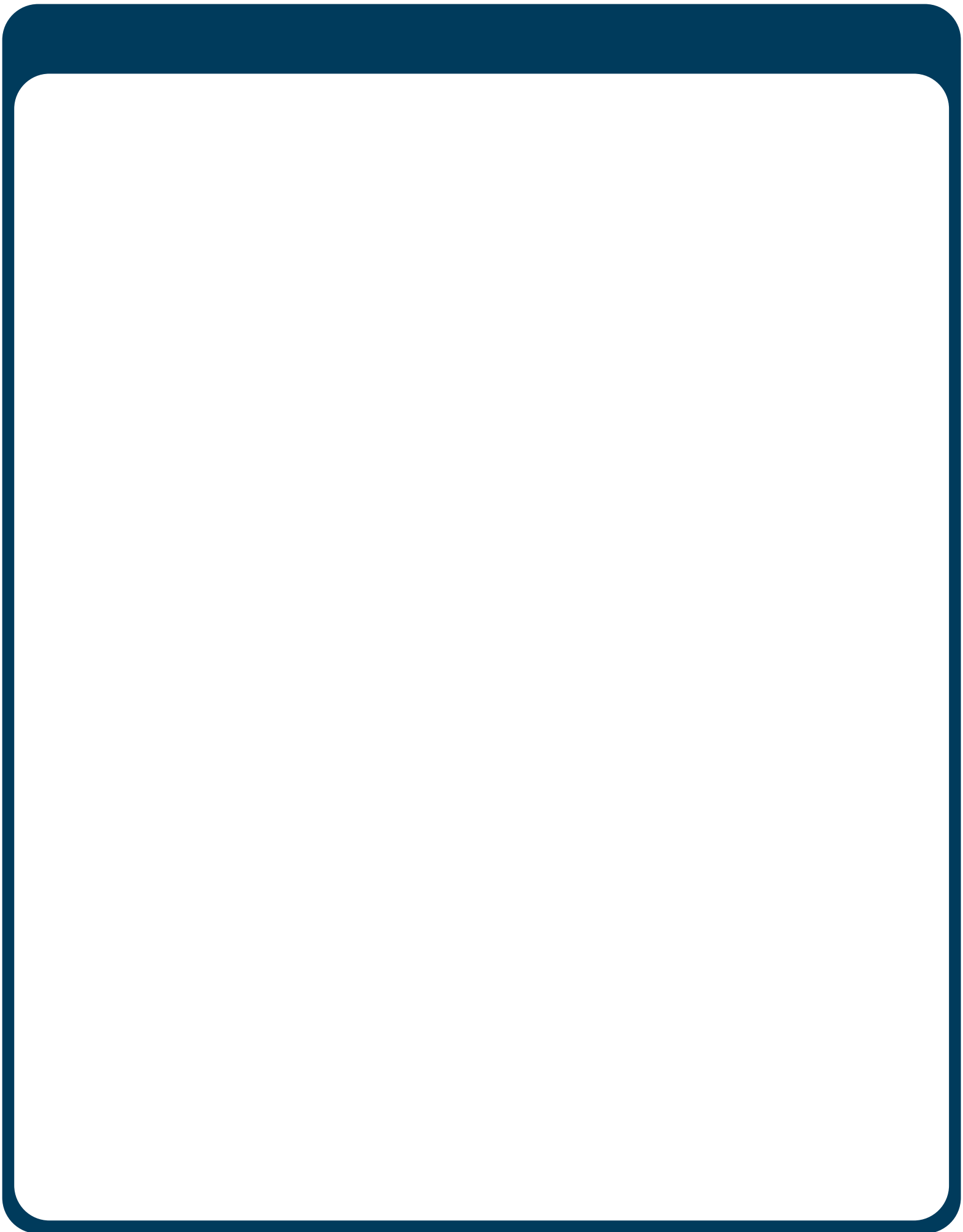
[View the Special Practice Team](#)

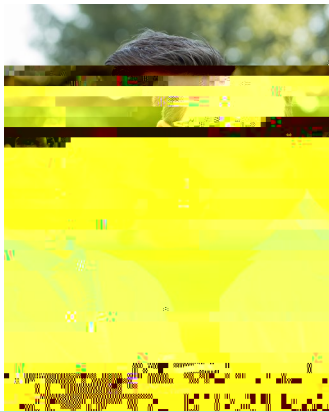


[Denise Whiteside, LPN](#)
Nurse





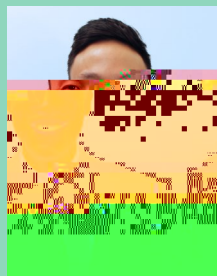




NEW RESIDENTS

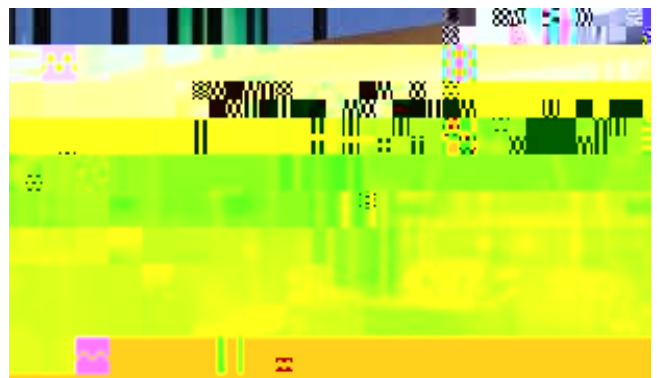
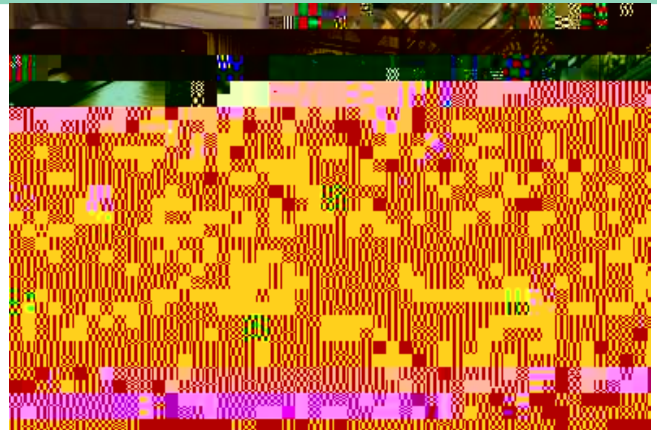
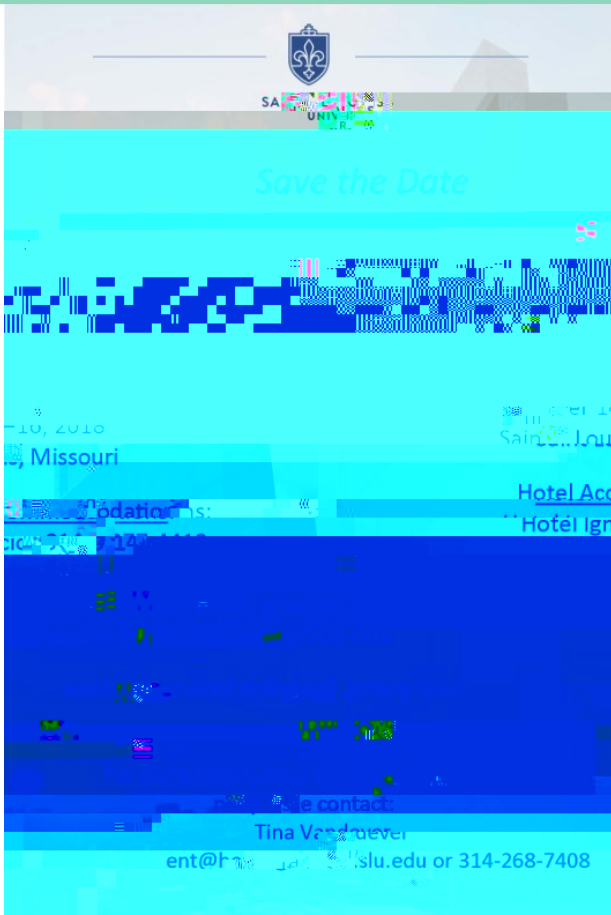
Scott Hong, MD

**Park University Medical
Center**



Joseph Sinnwell, MD

**Wake Forest School of
Medicine of Wake Forest
Baptist Medical Center**



- Assessing university students' sexual risk behaviors as predictors of human papillomavirus (HPV) vaccine uptake behavior. Rohde RL, Adjei Boakye E, Christopher KM, Geneus CJ, , Varvares MA, Vaccine. 2018 Jun 14;36(25):3629-3634
- Correlates of health information seeking between adults diagnosed with and without cancer. Adjei Boakye E, Mohammed KA, Geneus CJ, Tobo BB,

