

Match Day 2024

SAINT LOUIS UNIVERSITY
SCHOOL OF MEDICINE

During the pre-clinical years, our social committee reached out to faculty members of our courses to write a letter for us to read on match day. These letters are compiled here for your enjoyment.





A I

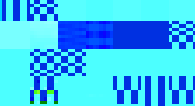
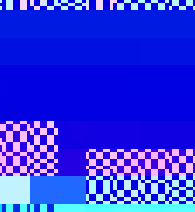
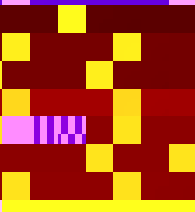
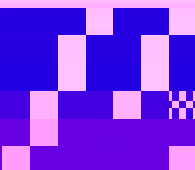
e e e e e Dece be a d a e e e
ea age f ca ee a ed ca de l fac a e
c e ed N a S c ea d F c d e a d e a
ab a eg e a d e ac ee e a
b d eg a a ab Y a e ea ed f
e b ec e a d TBL b a f d ec fa e b d
d T g a f e e e d a e ed a d de a d
a da eca e a ce E g a a W a
Ha e e ed e fab c f a e

We f d ced e c e e a e a d ea ed
ce e a d e g e e a a d e d We e
ed e a ee eeabe da e ea e
a f a d ac a e g e a a f ad fb df
a e ce A e ded e ead ea ed e
a e feac f e ce e bef e c d g
e e e fa e e a ab e a ae e a c ef
dd ca e a ea a ac ce a a a f e ac a
a a a

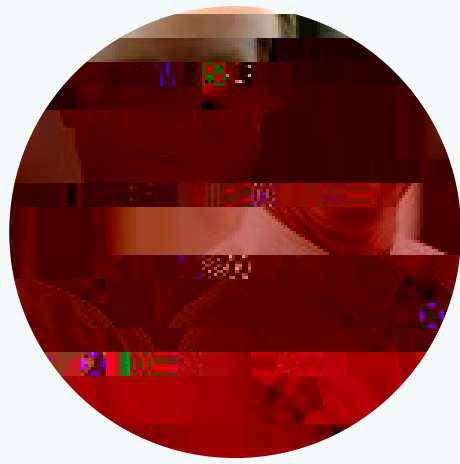
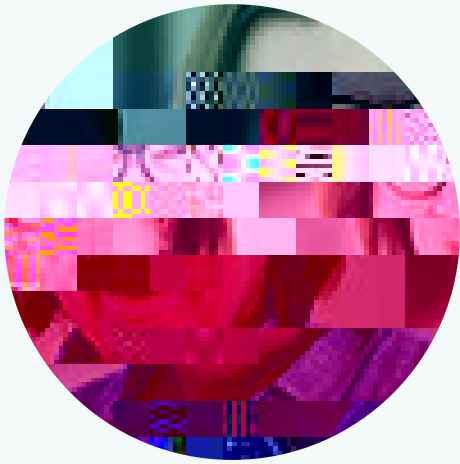
I add ea gab e ec ce ab ac e e eabe
ea a a f a eca e e eac e f
a e Y gf fb d d Pe a d ad de g ea ee
e ace e ac a b a



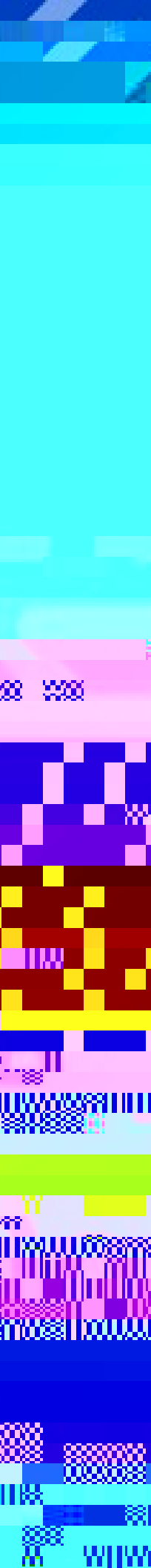




Do you remember how exhausted you were a



Congratulations to the Class of '24!



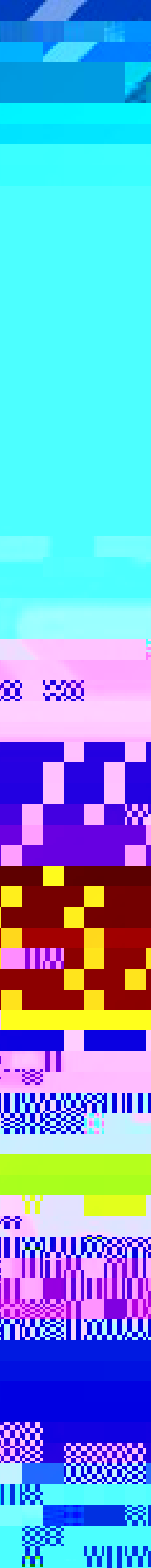


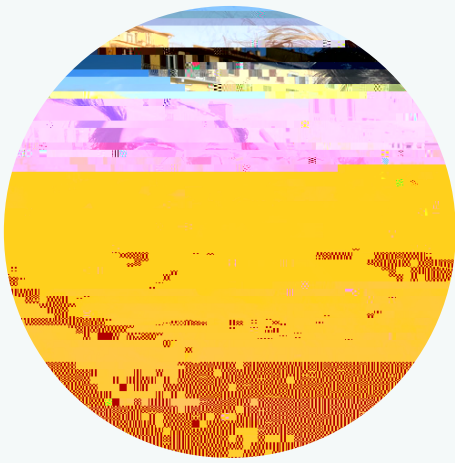
A

A

A

A





what a monumental
achievement!

I remember how nervous you all looked as you stepped into the gross anatomy lab for the first time, but you immediately began working to become acclimated to the space.

From learning how to correctly put on a scalpel blade to spending hours tracing nerves and vessels (and eventually learning that a scalpel isn't the best tool to do so), you all worked together to create a safe learning environment amidst a pandemic and learn from the bodies that were so generously gifted to the university.

I hope you maintain this spirit of camaraderie as you work to fulfill SLU's mission of being men and women for others. I wish you all the best in your future endeavors.

