

New Faculty Information Guide

Saint Louis University School of Medicine
 New Faculty Information Guide
 Office of Faculty Affairs and Professional Development (OFAPD)

Table of Contents

1.	About Saint Louis University School of Medicine	
1.1	History.....	2
1.2	Facilities and Affiliated Hospitals.....	3
1.3	Helpful Faces.....	6
2.	Helpful Information	
2.1	Academy of Medical Educators	17
2.2	Annual Faculty Reviews (with example)	17
2.3	Appointments and Titles.....	18
2.4	Emeritus	19
2.5	Faculty Governance/Faculty Committees.....	19
2.6	Faculty Manual.....	20
2.7	Graduate Medical Education	20
2.8	Grievances.....	21
2.9	Information Technology (IT)	21
2.10	Institutional Review Board (IRB)	21
2.11	Medical Center Library.....	22
2.12	Office of Faculty Affairs and Professional Development	22
2.13	Parking and Card Services	23
2.14	Phased Retirement	23
2.15	Promotion	23
2.16	Research.....	26

History - Key Dates

1836 — SLU establishes the first medical school west of the Mississippi River. The University's first medical school building was located on Washington Avenue at Tenth Street.

1903 — SLU acquires the Marion-Sims-Beaumont College of Medicine, located at Grand Boulevard and Caroline Street.

1932 — A gift from the estate of Firmin Desloge lays the groundwork for the hospital's construction. The University opens the Firmin Desloge Hospital — later named Saint Louis University Hospital.

1943 — Edward Adelbert Doisy, Ph.D., professor and chair of the Department of Biochemistry, is awarded the Nobel Prize for his discovery of the structure and chemical nature of Vitamin K.

1972 — SLU surgeons conduct the first heart transplant in the Midwest. Members of the heart transplant team include: Russell Kraeger, M.D.; John Schweiss, M.D.; Vallee Willman, M.D.; George Kaiser, M.D.; Henrick Barner, M.D.; J. Gerard Mudd, M.D.; Richard Whiting, M.D.; John Codd, M.D.; and Kenneth Nachtnebel, M.D.

1989 — SLU founds the Center for Vaccine Development. The center has been instrumental in developing numerous vaccines that protect public health, including the FluMist nasal spray influenza vaccine, and vaccines against smallpox and other potential biological weapons following the Sept. 11 attacks on the United States.

1995 — SLUCare Physician Group is formed as the academic medical practice of Saint Louis University. The physician group includes more than 500 health care providers in hospitals and medical offices throughout the St. Louis region.

1998 — SLU sells Saint Louis University Hospital to Tenet Healthcare Corporation.

2002 — The Saint Louis University Cancer Center, a joint initiative between SLUCare and Saint Louis University Hospital, opens.

2007 — Saint Louis University opens the doors to the \$82 million Edward A. Doisy Research Center, which is designed to further scientific progress and inspire creativity and collaboration.

2015 — SSM and Saint Louis University acquire Saint Louis University Hospital from Tenet Healthcare Corporation.

2016 — Plans are made for a \$550 million SSM Health Saint Louis University Hospital and ambulatory care center with more than 800,000 square feet of space, 316 private patient rooms, an expanded Level 1 trauma center and emergency department, larger intensive care units and expanded patient parking.

2022 - SSM Health acquires SLUCare Physician Group, the academic medical practice of Saint Louis University.

Source: <https://www.slu.edu/medicine/about/history.php>

Facilities and Affiliated Hospitals

The Saint Louis University School of Medicine is located within SLU's Medical Center along South Grand Boulevard in St. Louis, Missouri.

Clinical Skills Center

SLU's Clinical Skills Center was the first of its kind in North America. Located on the second floor of the Health Sciences Education Union, it's used for the teaching and assessment of clinical skills such as history taking and physical examination.

In

SSM Health St. Mary's Hospital

The 525-bed SSM Health St. Mary's Hospital is the headquarters for the Saint Louis University School of Medicine's Department of Obstetrics, Gynecology and Women's Health and our family practice residency programs. The hospital has distinctive capabilities in high-risk pregnancies and fetal surgery.

Mercy Hospital St. Louis

Mercy Hospital St. Louis is part of the Mercy Health Care System. It is the sixth largest hospital in the United States.

Helpful Faces

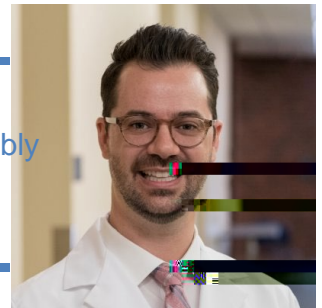
Christine Jacobs, M.D.
Vice President of Medical Affairs
Dean of the School of Medicine
megan.l.kaiser@health.slu.edu
(Admin)

Stephanie Decker
Chief of Staff to the
Dean of the School of Medicine
stephanie.decker@health.slu.edu



Jane McHowat, Ph.D.
Associate Dean
Faculty Affairs and Professional
Development
jane.mchowat@health.slu.edu

T. Scott Isbell, Ph.D.
President, SOM Faculty Assembly
Professor, Pathology
scott.isbell@health.slu.edu



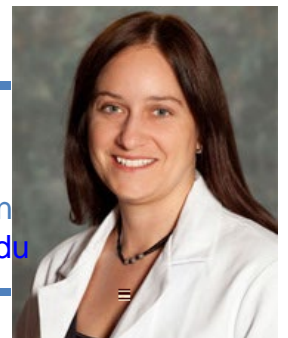
Adriana Montaña, Ph.D.
Vice Dean for Research
School of Medicine
adriana.montano@health.slu.edu

Noah Hillman, M.D.
Associate Dean for Clinical
Research
School of Medicine
noah.hillman@health.slu.edu



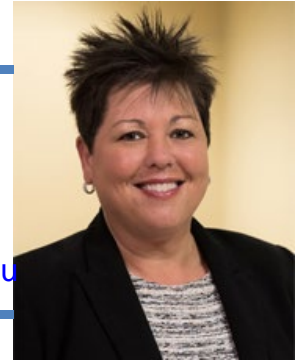
Chad Miller, M.D.
Senior Associate Dean
Undergraduate Medical
Education
chad.miller@health.slu.edu

Julie Gammack, M.D.
Senior Associate Dean
Graduate Medical Education
julie.gammack@health.slu.edu





Katrina Wade M.D.
Interim Associate Dean
Office of Diversity, Equity and
Inclusion
katrina.wade@health.slu.edu



Lisa Israel, M.Ed.
Director
Office of Professional
Oversight
lisa.israel@health.slu.edu

Academy of Medical Educators

The goals and mission of the Academy of Medical Educators at Saint Louis University include:

- f* Recognizing medical educators for their teaching activities, their educational scholarship and innovation, and their leadership.
- f* Fostering an environment that promotes the continuous improvement of teaching.
- f* Encouraging educators to link teaching and learning to improved patient outcomes and health care systems performance.
- f* Rewarding educators for their efforts through promotion and public recognition.

The Academy at the Saint Louis University School of Medicine consists of two arms, an honorific pathway and a developmental pathway. Applications for the developmental pathway are accepted on a rolling basis.

For More Information

Visit: [Academy of Medical Educators website](#)

Annual Faculty Reviews

Every full-time faculty member is evaluated annually by the Department Chairperson or comparable administrator. All evaluations of faculty members are conducted openly with the faculty member's full knowledge.

Because the primary purpose of the annual review is to provide information that allows the faculty member to improve his/her teaching, student advising, research and scholarly activity, and University and community service, the evaluation should be candid, providing the person evaluated the opportunity to better understand his/her strengths as well as areas of relative weakness.

School of Medicine annual reviews typically occur between May – Jun and review the preceding academic year.

Emeritus

Upon recommendation of the department chair, the College, School, Center, or Library Rank and Tenure Committee, the appropriate Dean or comparable administrator, and the Provost, emeritus/a status may be granted to tenured or non-tenure-track faculty members with at least ten years of full-time service who resign their faculty appointment. In extraordinary circumstances, faculty members with a shorter period of service may, upon recommendation of the appropriate Dean or comparable administrator, be granted emeritus/a status.

Read: [School of Medicine Faculty Bylaws](#)

Visit: [School of Medicine Committees website](#)

Faculty Manual

The Faculty Manual is a foundational document setting out, in many respects, the role of the faculty in University governance. It also specifies rights, powers, privileges, and responsibilities of faculty. Insofar as it does so, it is incorporated by reference in all contracts of employment between faculty and the University.

For More Information

Read: [Faculty Manual](#)

Graduate Medical Education

SLU trains more than 600 residents, subspecialty residents and fellows in 60 programs throughout our affiliated network of teaching hospitals and other partners. Our residency programs and subspecialty residency programs are approved and accredited by the Accreditation Council for Graduate Medical Education (ACGME) and are subject to board and subspecialty board certification.

Fellowship programs are defined as recognized postgraduate research or clinical programs that have not yet had accreditation standard and specific subspecialty board requirements developed. These programs are approved by the Graduate Medical Education Committee of the School of Medicine.

For More Information

Visit: [Graduate Medical Education website](#)

Grievances

The Office of Professional Oversight, was established in 2018, as a joint venture between the Saint Louis University School of Medicine and SSM Saint Louis University Hospital. At the core of its mission, the Office of Professional Oversight is responsible for providing all stakeholders (students, trainees, faculty and physicians) a fair and neutral environment to seek assistance and support, file a grievance, or report acts of unprofessional behavior or concerns. In addition, the Office of Professional Oversight also serves as the Ombudsperson for Saint Louis University School of Medicine.

The Office of Professional Oversight can assist all members of the School of Medicine community with issues related to conflict resolution, interpersonal communication, academic, professional, or administrative concerns. The goal is to provide each of these services in an environment that is built upon trust, confidentiality and neutrality.

For More Information

Visit: [Office of Professional Oversight website](#)

Information Technology (ITS)

As the primary provider of technology support and services at SLU, the Information Technology Services (ITS) division is committed to continuous improvement and progressive innovation directly aligned with the mission and vision of SLU.

IT professionals and Service Desks are distributed across campus to assist students, faculty, staff, researchers, clinics and guests with campus technology. Contact them at (314) 977-4000 for more information. Please visit the ITS website for Training and How-to Guides, Policies, Password Help, Software Downloads, and more.

For More Information

Visit: [ITS website](#)

Medical Center Library

SLU's Medical Center Library is located on the second floor of the Learning Resources Center. In addition to an impressive

Research

At Saint Louis University School of Medicine, our scientists focus on investigations that involve the basis of disease and how understanding the fundamental characteristics of diseases can be exploited for clinical treatment.

Our goal, as scientists and clinicians, is to bring science to the bedside and to offer novel therapies. Saint Louis University is one of only nine Catholic universities with a higher or highest research activity designation from the Carnegie Classification of Institutions of Higher Education.

Visit the School of Medicine's Research website for more information on:

- ¾ Centers and Institutes

- ¾ Clinical Trials Office

- ¾ The Grant Process at SLU

recognizing the rights and responsibilities of the Faculty of the School of Medicine as outlined in the Faculty Manual.

For More Information

Read: [SLU School of Medicine Constitution](#)

SLU School of Medicine Faculty Bylaws

The Bylaws have been developed to articulate the role of the faculty in the shared governance of the Saint Louis University School of Medicine as broadly vult-6 (l-3.2 (si-3.3 (n)-0.7 (i)-6 (d)-0.7 (F11 (ev)81.3 (C)-3.6 (oc-3.2 (si-3.(v)-8.5 (eSo0t-6

Undergraduate Medical Education

At Saint Louis University, we are committed to teaching both the science and the art of medicine.

Our four-year M.D. program integrates the basic and clinical sciences through an organ system approach to medical education. Didactic settings are varied and include small group activities, computer-based instruction and case-based tutorials.

Our Clinical Skills Center offers students the opportunity to interact with trained standardized patients and practice selected clinical procedures on simulated models and mannequins before participating in the care of actual patients.

During third- and fourth-year clinical rotations, students continue developing their diagnostic and treatment