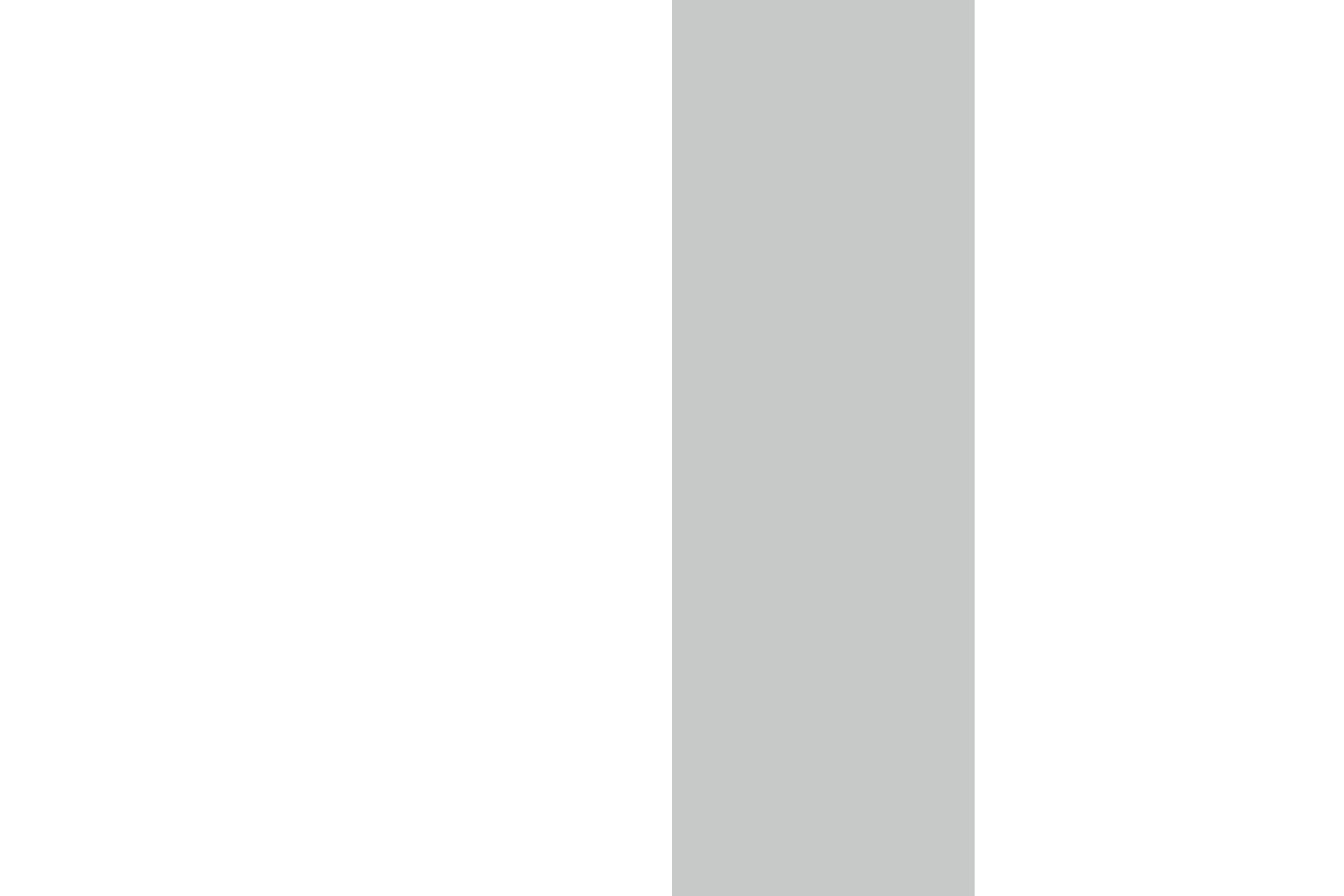


SAINT LOUIS UNIVERSITY

President's Report

2021





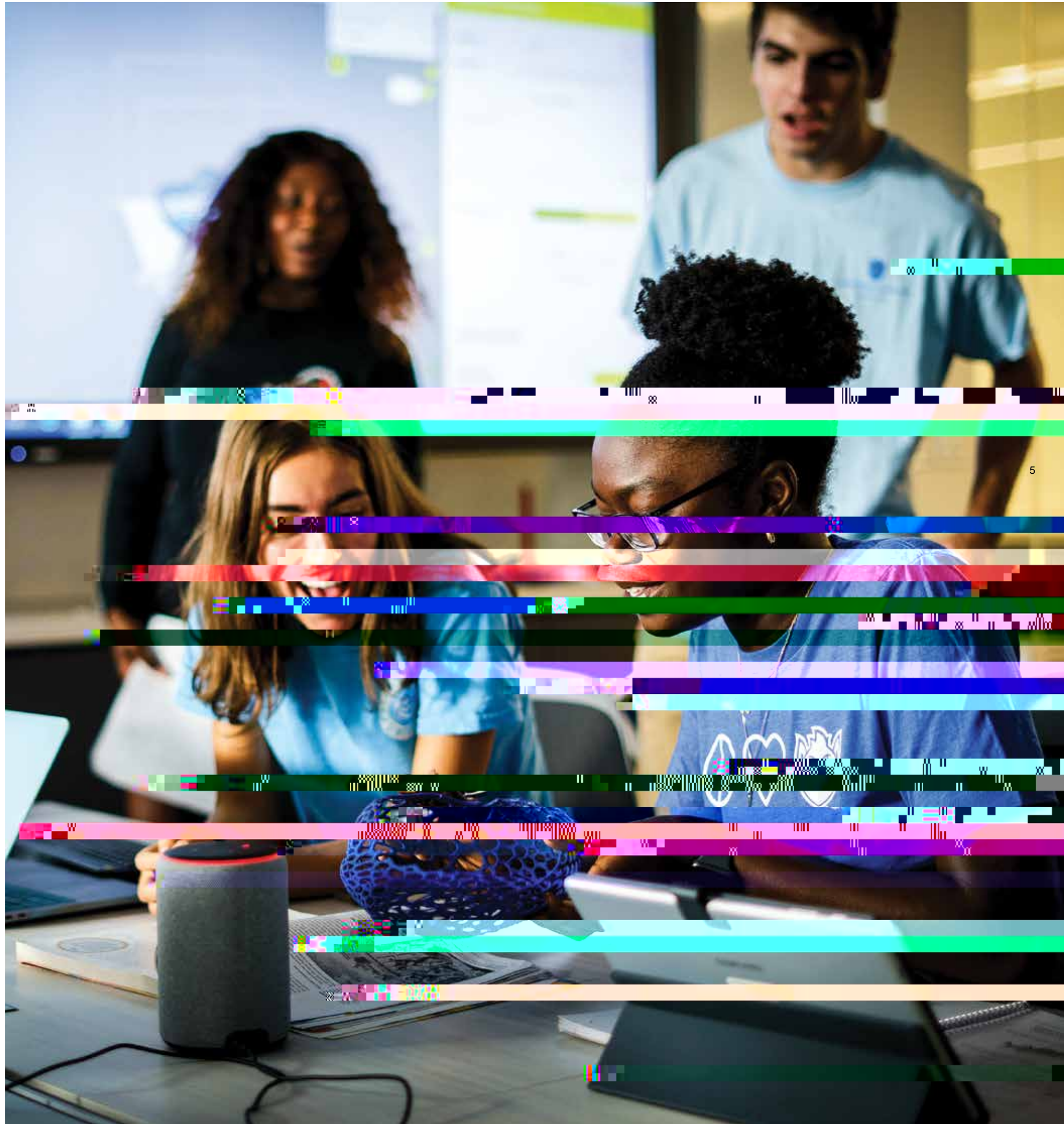
Addressing the many challenges presented by COVID-19 was the top priority in 2021.

Saint Louis University successfully wrapped up its 2020-21 academic year with mostly in-person classes, entirely in-person labs and 3,500 students living on campus.

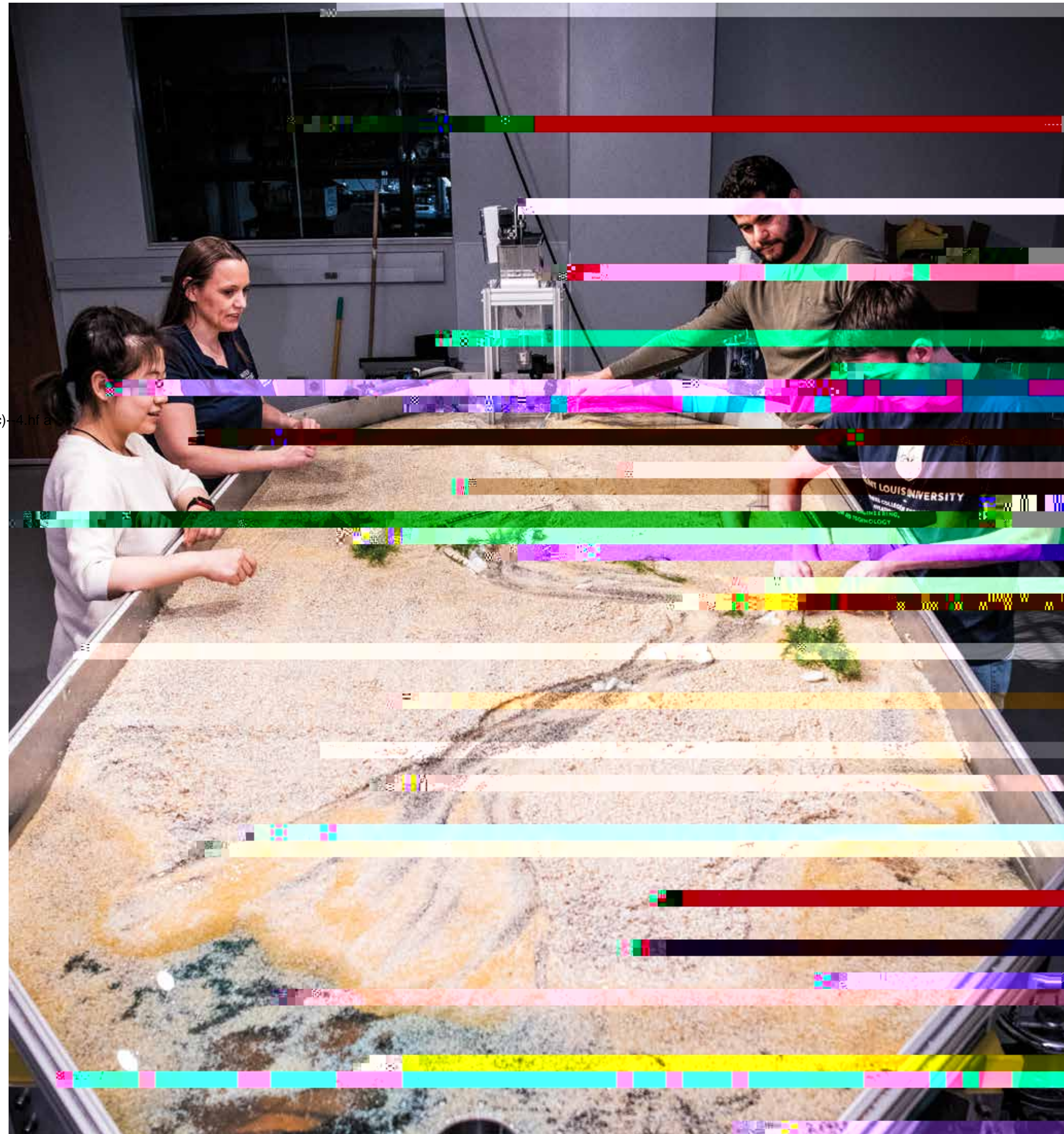
But how was SLU able to keep its campus open at a time when other colleges across the country were being forced to shelter in place, suspend in-person classes or move completely online?

University leadership made the decision early in the crisis to engage SLU's medical, public health and disaster preparedness experts to lead the University's response as a team. That academic year 2020-21 response included:

- › Random asymptomatic testing of 10% of on-campus students each week
- › A rapid response contact tracing program, with quarantine and isolation housing on campus
- ›



In 2021, 60 researchers from 20 departments were working on COVID-19 projects. As part of a record-setting \$50 million gift from



SLU'S ABILITY TO REMAIN OPEN, TEACH A MAJORITY OF CLASSES IN PERSON, AND HOUSE 3,500 STUDENTS ON CAMPUS DURING THE 2020-21 ACADEMIC YEAR FOSTERED CONFIDENCE WITH STUDENTS AND PARENTS WHO WERE REASSURED THAT THE UNIVERSITY WOULD BE JUST AS SAFE FOR STUDENTS DURING 2021-22.

More Students at All Levels Choosing SLU

In fall 2021, SLU welcomed the second-largest freshman class in University history, and total student enrollment was the highest since fall 2016. The percentage of freshman students of color grew to 22.1%, as the University stepped up efforts to advance inclusive excellence on campus. The percentage of freshmen receiving Pell Grants was the largest in University history.

To further improve access to a Saint Louis University education, SLU is standardized-test-optional for all incoming freshmen for the second consecutive year. In fact, more than 50% of students who enrolled in fall 2021 chose not to submit test scores.

SLU's ability to remain open, teach a majority of classes in person, and house 3,500 students on campus during the 2020-21 academic year and parents who were reassured that the University would be just as safe for students during 2021-22.

applications. In fact, total applications for undergraduate, graduate and professional programs were all up substantially from the prior fall, ultimately enrolling students from all 50 states and more than 70 foreign countries.

Again this year, SLU's average student debt ranked among the lowest for all private institutions in the country, and nearly 40% of SLU students graduate with no student loan debt.

1,794

New freshmen — second-largest class in SLU history

8,138

Undergraduate enrollment, up 4.7% from fall 2020

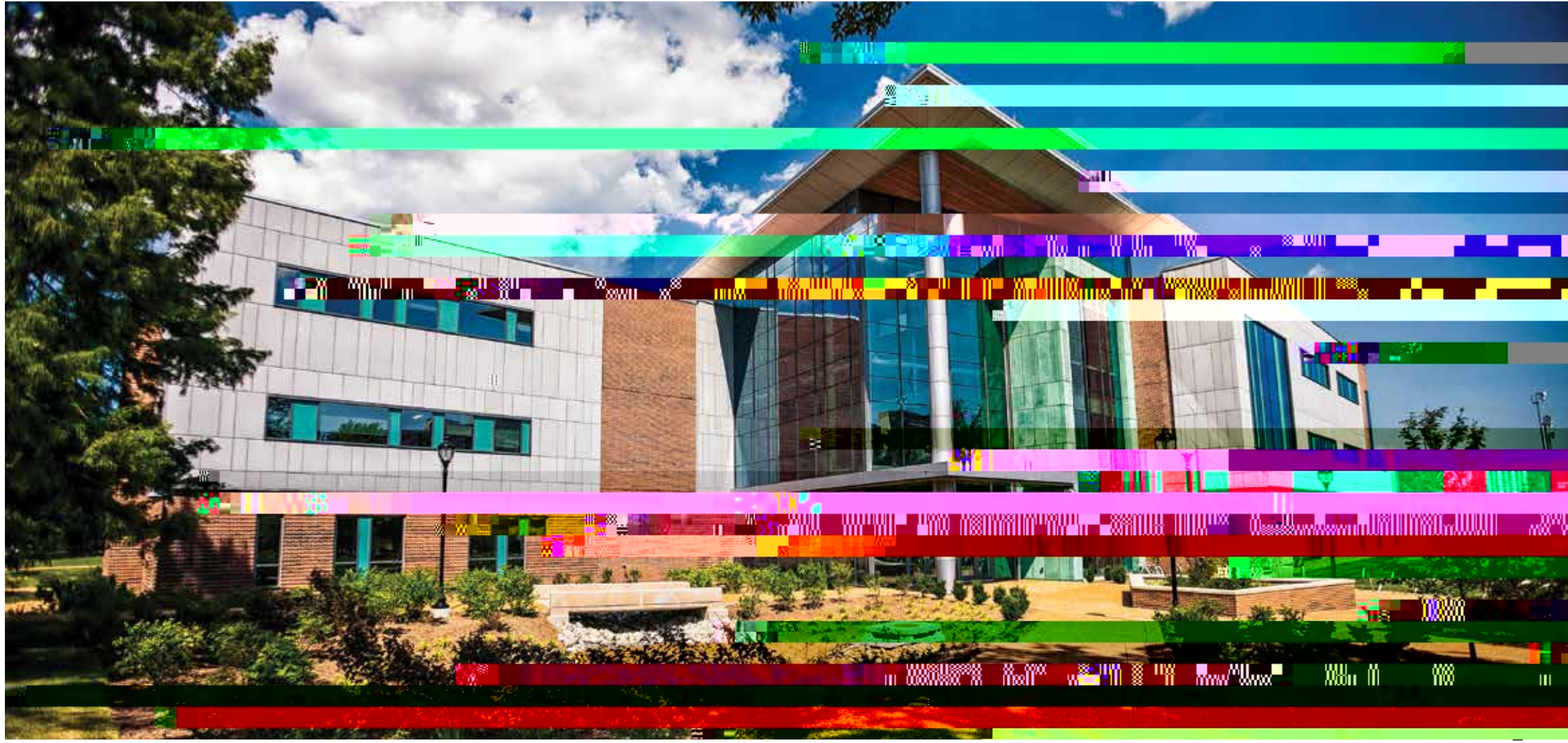
4,745

Return of the Global Experience

LU's Madrid, Spain, campus — the American university in Spain — returned to a fully in-person experience in fall 2021 after implementing hybrid programming during the previous academic year due to COVID-19. The virus had limited the ability of students — both from SLU and dozens of other colleges and universities — to study abroad in Madrid and throughoutNor







f - - % X • α = f



On the Forefront of Patient Care

S LUCare Physician Group is the academic medical practice of Saint Louis University and features more than 600 physicians who also are faculty members in the SLU School of Medicine — the oldest medical school west of the Mississippi River.

After transitioning many non-critical appointments to virtual visits as COVID-19 cases grew dramatically in 2020 and into 2021, SLUCare, following CDC guidance, returned to mostly in-person patient visits by spring 2021. The practice saw patient visits and procedures

SLUCare researchers also developed a national blueprint, promoted by the American College of Surgeons, for restarting elective surgeries during COVID-19.

«fj i• q8i~qi_qi i]= qi0pT=i#=j_qi1•]_#qA Catholic hospital partner SSM Health, which operates eight hospitals in the greater St. Louis area, including Saint Louis University Hospital and Cardinal Glennon Children's Hospital. SLUCare physicians and health care providers perform surgeries and other procedures at these facilities.

The practice now has more than 30 clinic locations in St. Louis and western Illinois, with its primary location in the new Center for Specialized Medicine right next to the new SSM Health Saint Louis University Hospital. The state-of-the-art CSM is equipped with the newest and most technologically advanced medical treatment equipment and facilities anywhere.

Expanding Alumni Outreach and Support

In 2021, alumni engagement events continued to be primarily virtual, with more than 90 events and 15,000 registrants since the pandemic began. These included:

- > The School of Social Work's 90th Anniversary Celebration

